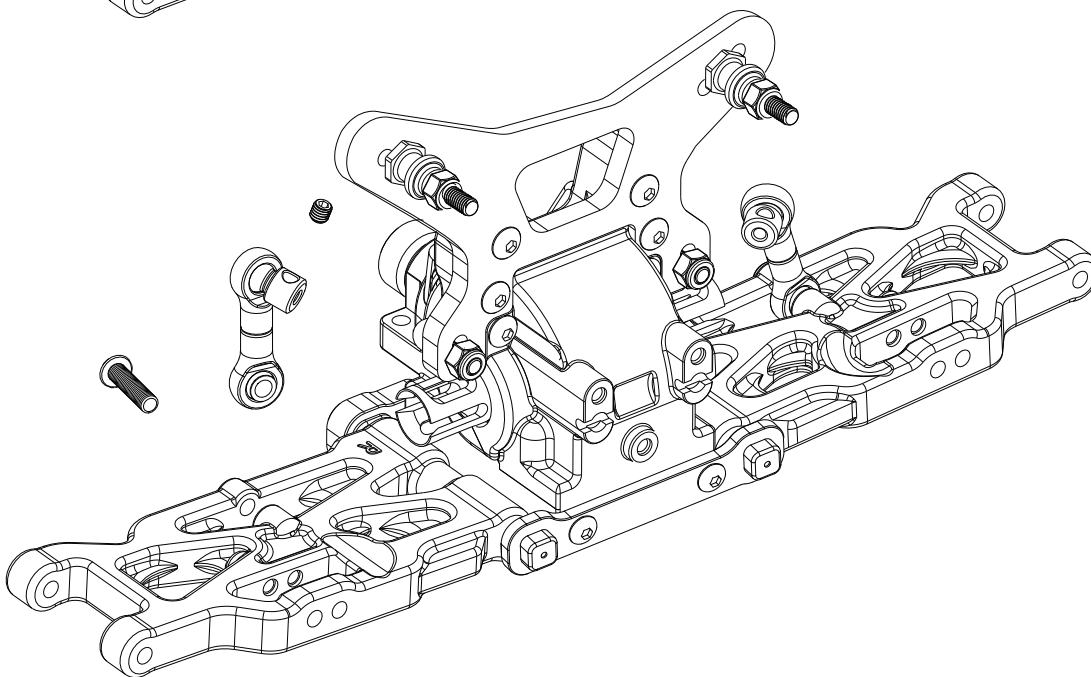
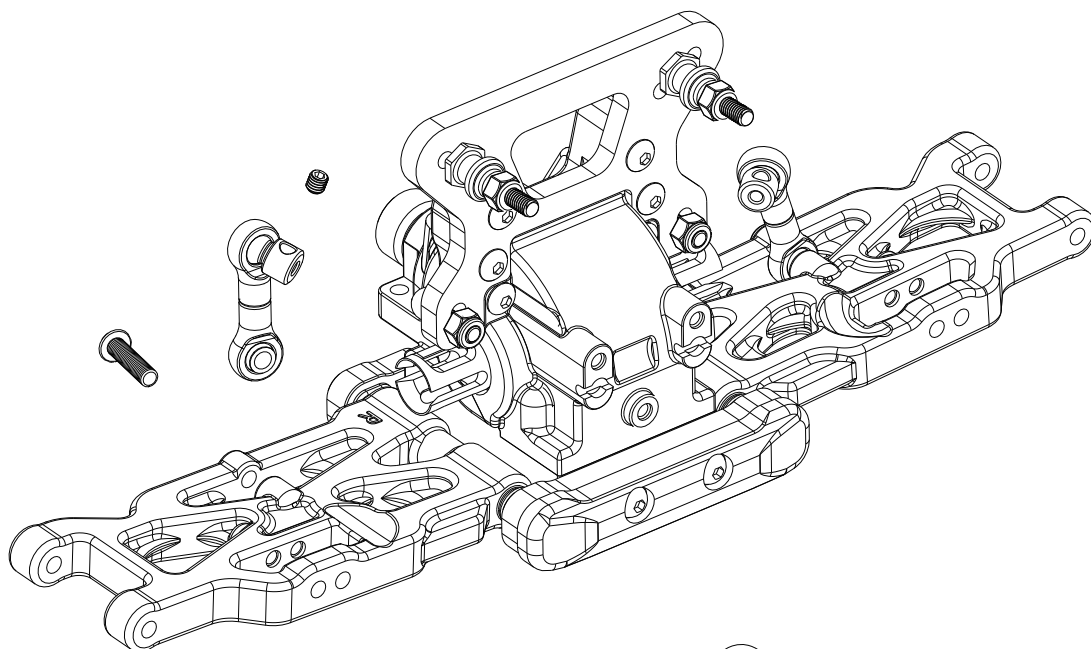


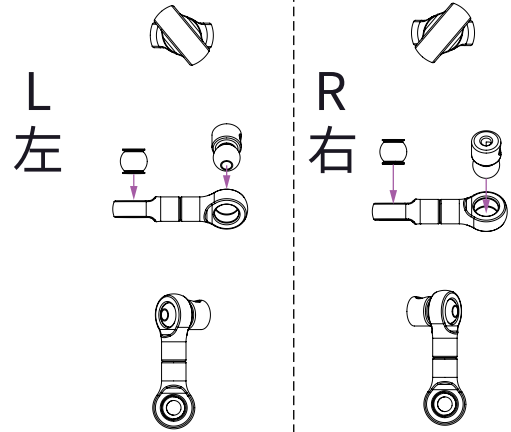
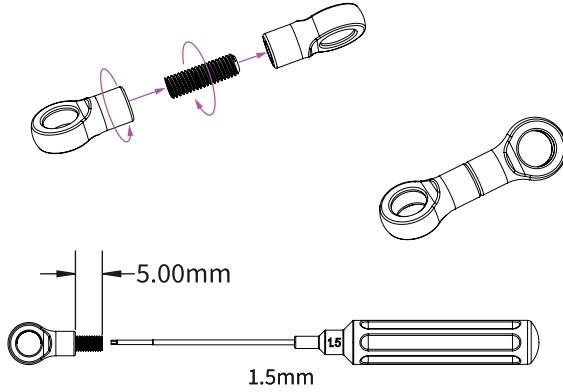
Anti-Roll Bar ASSEMBLY スタビライザー組み立て



PARTS LIST			必要数
C7058	5.5mm Ball Cap Open(2)	5.5mm オープンボールカップ(2)	×2
C7059	5.5mm Ball End Aluminum(2)	5.5mmボールエンド(2)	×2
C7060	Stop Collar Aluminum(2)	センターストップカラー(2)	×1
C7078	Pivot Ball Ø5.5mm(4)	Ø5.5mmピボットボール(4)	×1
C7095	Stabilizer bar Set	スタビライザーバーセット	×1
C8069	Anti-Roll Bar Brace	スタビライザーブレース	×1
LCSK06	Round Head Screw M3×14mm (2.0mm Hex Socket/20pcs) ラウンドヘッドスクリュー3x14mm(2.0mm Hex Socket/20pcs)		×1

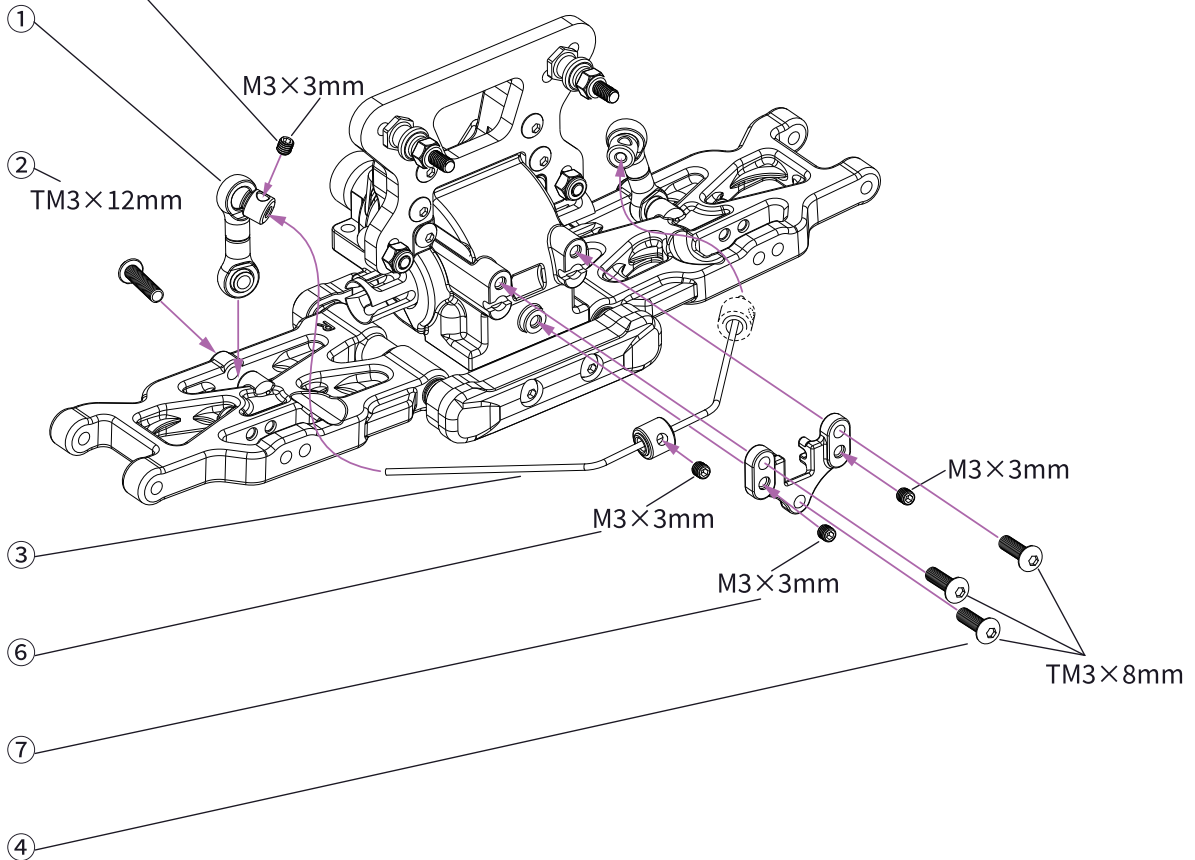
Set Screw × 2
M3 × 10mm

2 ×



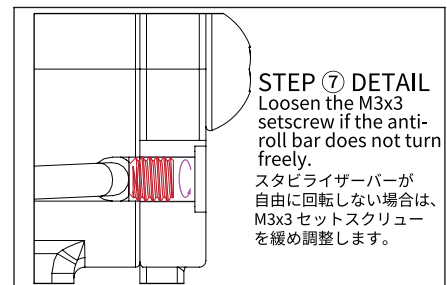
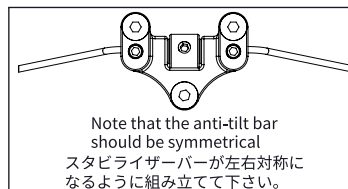
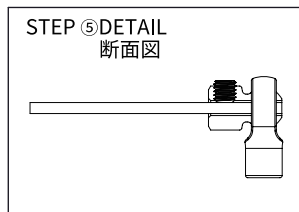
Set Screw × 5
M3 × 3mm

Installation order: ① → ② → ③ → ④ → ⑤ → ⑥ → ⑦
組み立て順番: ① → ② → ③ → ④ → ⑤ → ⑥ → ⑦



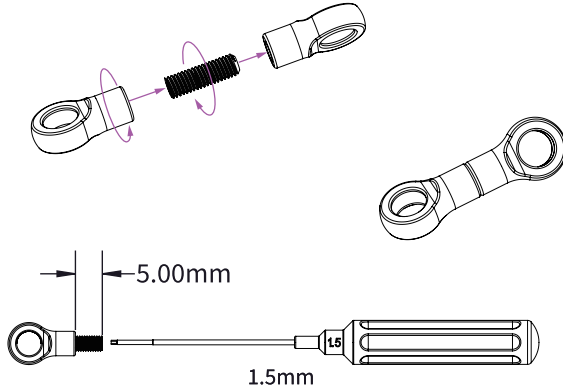
Round Head Screw × 3
TM3 × 8mm

Round Head Screw × 2
TM3 × 12mm



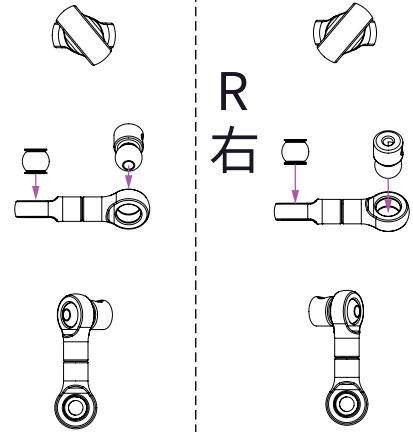
Set Screw × 2
M3 × 10mm

2 ×



L
左

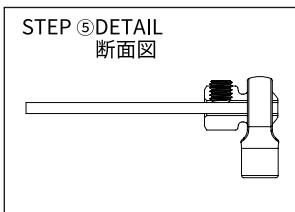
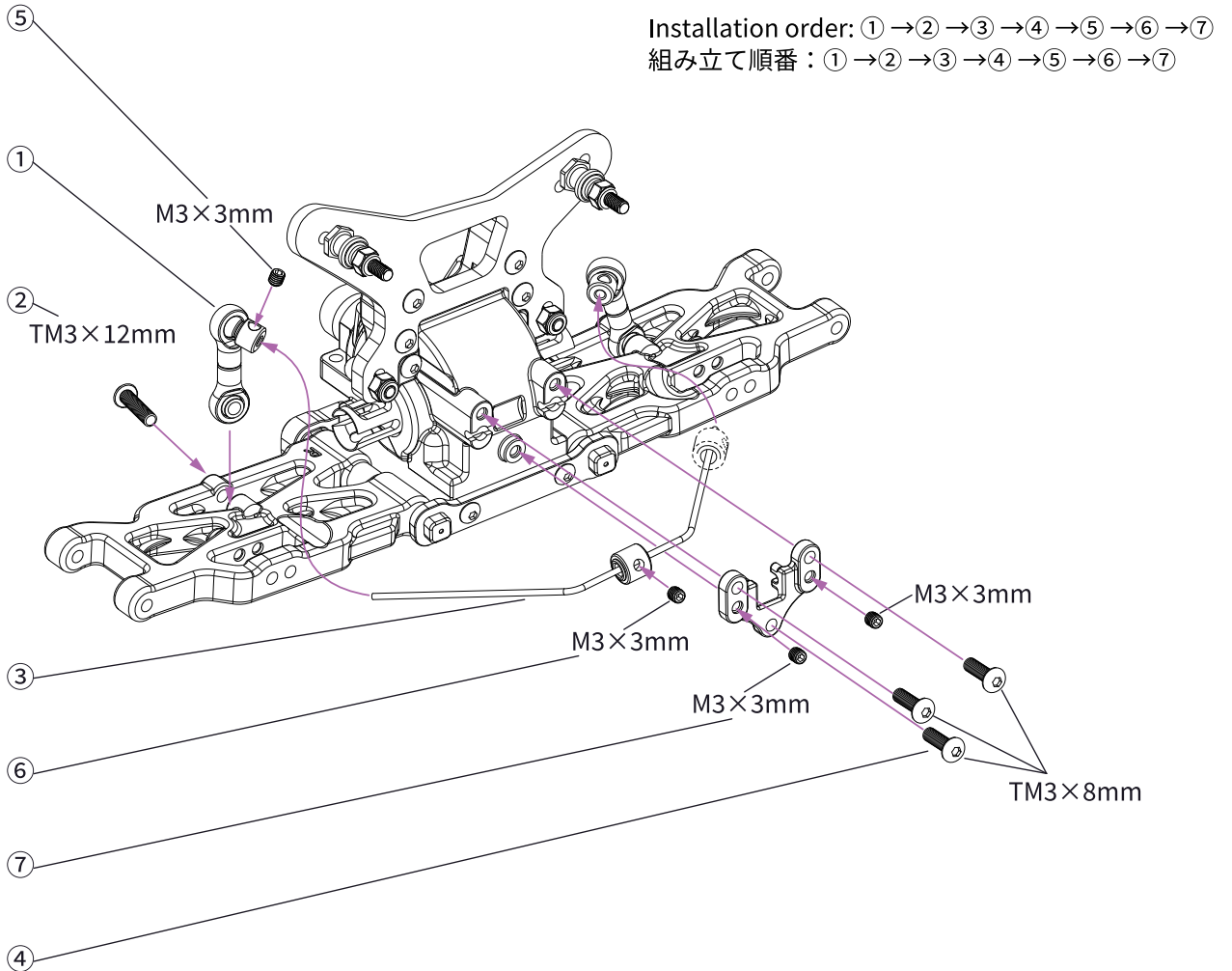
R
右



Set Screw × 5
M3 × 3mm

Round Head Screw × 3
TM3 × 8mm

Round Head Screw × 2
TM3 × 12mm



Note that the anti-tilt bar should be symmetrical
スタビライザーバーが左右対称になるように組み立てて下さい。

